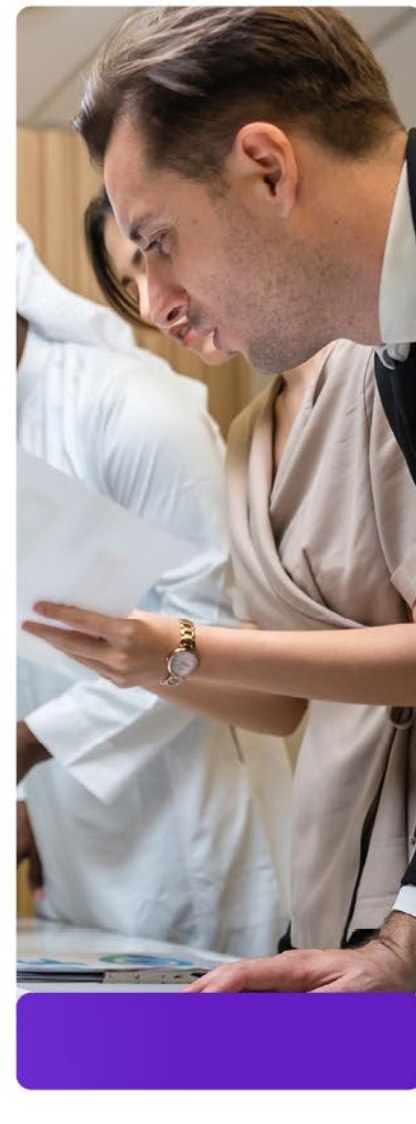


International Masterclass

19 June 2025

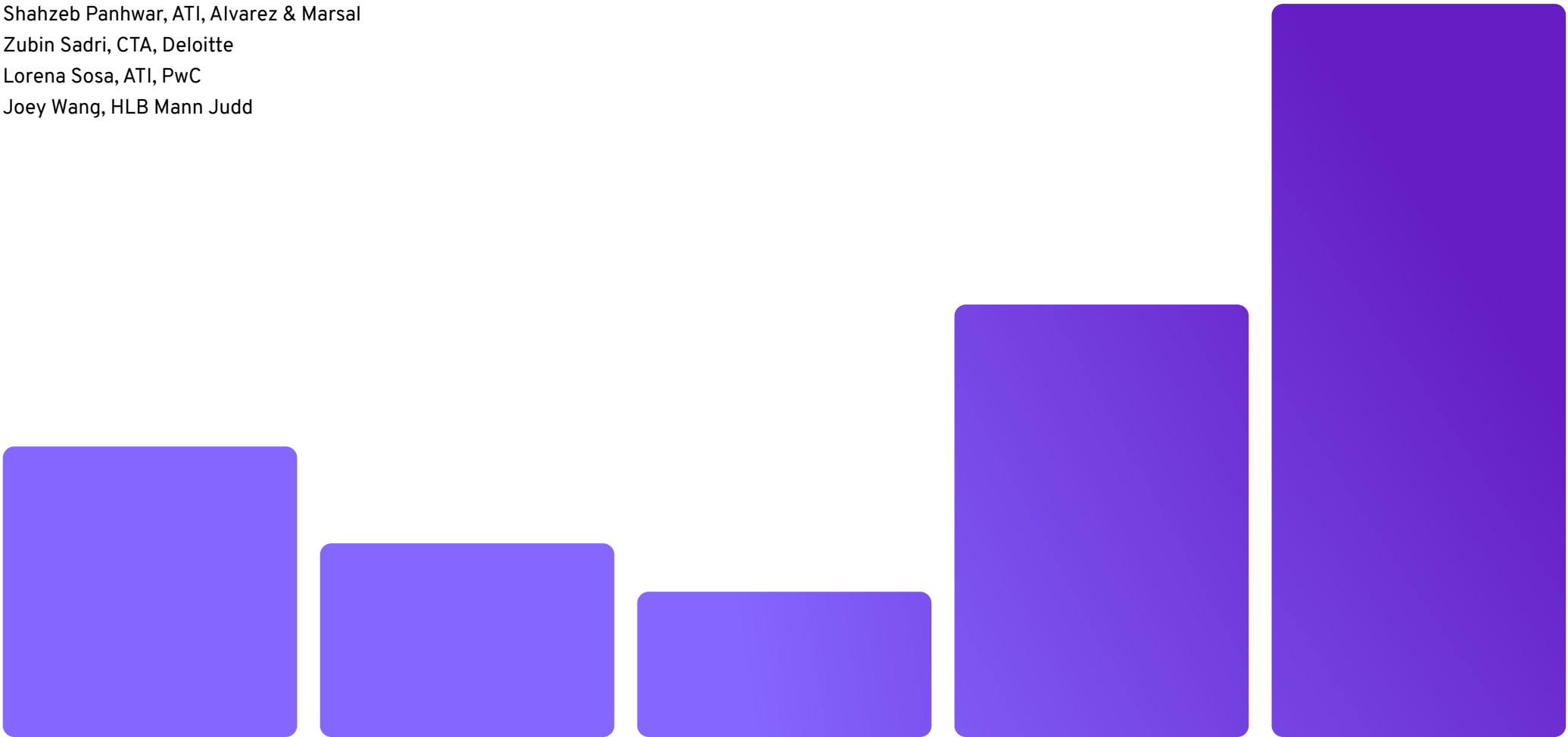
**The Establishment Sydney
& Online**

7 CPD hours



The Tax Institute gratefully acknowledges the generous assistance of members of the Organising Committee:

Stefan Hempelmann, EY, Chair, Masterclass Organising Committee
Mathew Chamberlain, CTA, EY
Brett Curtis, ATI, Grant Thornton
Kai-Chen Lamb, King & Wood Mallesons
Peter Oliver, CTA, KPMG
Shahzeb Panhwar, ATI, Alvarez & Marsal
Zubin Sadri, CTA, Deloitte
Lorena Sosa, ATI, PwC
Joey Wang, HLB Mann Judd





Welcome

It is with great pleasure that I welcome you to the 2025 International Masterclass. Building on the success of last year's event, we are excited to bring together a diverse group of professionals, experts, and enthusiasts from around the country to share knowledge and insights on the latest developments in international tax.

The international tax landscape is rapidly evolving, influenced by geopolitical shifts, technological advancements, and economic transformations. Recent developments are reshaping how governments establish and enforce tax regulations worldwide. Key initiatives including BEPS 2.0, tax transparency, thin capitalisation and the taxation of the digital economy are currently being actively implemented.

The 2024 Masterclass set a high standard with its engaging sessions and insightful discussions. This year, we aim to surpass those expectations by presenting a range of new topics. Our carefully curated agenda includes practical insights and policy updates on BEPS 2.0 and recent US tax developments and will provide you with the latest insights on cross-border financing, M&A, IP taxation and public CbCR.

The sessions will provide in-depth technical views and much needed practical insights and deliver a variety of perspectives. We will end the program with closing drinks which is a opportunity to network and build connections.

I'd like to extend a huge thank you to the organising committee and our presenters for their efforts in designing and delivering this program. As international taxation grows in significance, the International Masterclass is becoming the premier event for providing attendees with essential, immersive knowledge and insights in this field. I look forward to seeing you in Sydney in person or virtually.



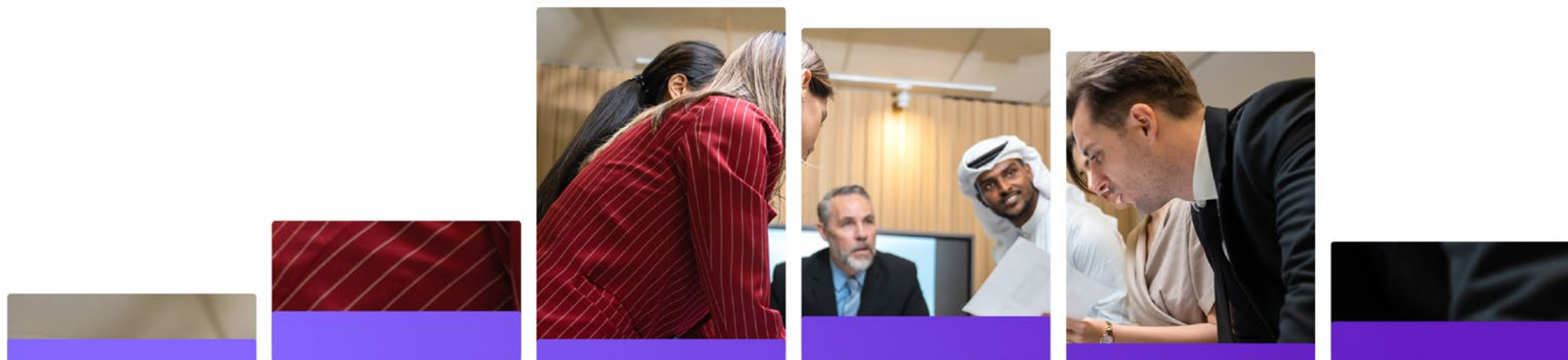
Stefan Hempelmann
Chair, Masterclass Organising Committee

Early bird pricing offer
Register on or before 23 May 2025 to save!

Technical program

Thursday, 19 June 2025

Time *AEST	Session
8:00 – 8:25am	Registration
8:25 – 8:30am	Welcome and opening address Speaker: Stefan Hempelmann , Chair, Masterclass Organising Committee
8:30 – 9:30am	Session 1: Pillar 2 practical insights Speaker: Jayde Thompson, Alvarez & Marsal With the enactment of Pillar 2 in effect from 1 January 2024, tax practitioners across the country are delving into the specifics of the new legislation. This session will present a range of practical case studies highlighting some of the key issues emerging from the Australian Pillar legislation, including application of the transitional safe harbour rules, Australia’s Domestic Minimum Tax and the interactions with Australia’s tax consolidation regime and trust structures.
9:30 – 10:30am	Session 2: Pillar 2 the BEPS 2.0 outlook – A roadblock or a bump in the road? Speaker: Chris Miller, EY President Trump has taken aim at Pillar Two of the BEPS 2.0 solution developed by the Inclusive Framework (IF) on BEPS and in doing so raises questions about the viability of Pillar Two as a global solution. Meanwhile, the IF remains at an impasse in negotiating Pillar One with destabilising unilateral measures threatening to emerge in its place. Former OECD official, Chris Miller, will discuss the current status of BEPS 2.0 and potential developments that could be observed in this space.



Technical program

Thursday, 19 June 2025 continued

Time *AEST	Session
10:30–11:00am	Morning tea
11:00–12:00pm	<p>Session 3: U.S. tax developments – Potential impact of the Trump administration tax policies on investment and trade opportunities</p> <p>Panel: Chris Hogger, PwC</p> <p>The Trump administration has moved quickly, announcing new tariffs and other tax policy reforms, including an intention to extend expiring tax concessions from President Trump's signature 2017 tax reforms. These changes bring significant uncertainty for investment in the U.S. and the global trade landscape. It is also unclear how other countries may respond and whether the US could invoke existing tax rules to increase U.S. rates of tax on foreign nationals, residents or corporations of foreign countries where it perceives burdensome, discriminatory or extraterritorial taxes apply to US citizens or corporations. This panel discussion will reflect on tax policy announcements from the early months of the second Trump administration, what may lie ahead and how these announcements may impact bilateral trade, investment and tax settings between Australia and the U.S.</p>
12:00pm–1:00pm	<p>Session 4: M&A</p> <p>Speaker: Tamara Phillips, Sixth Floor Selborne & Wentworth Chambers</p> <p>This session will cover:</p> <ul style="list-style-type: none"> • A overview of the tax issues that arise when determining whether a foreign resident is subject to tax on exit (capital/revenue account, TAP vs. non-TAP, source of income, existence of a 'permanent establishment' and 'treaty shopping') • How these can vary depending on the type of investment made (private equity, infrastructure, property) • Practical management of potential withholding obligations (and notification obligations under last year's Budget measures); and • Practical issues around the management of ATO interventions in these types of exits, and how these can be practically managed and resolved.
1:00–2:00pm	Lunch
2:00pm–3:00pm	<p>Session 5: Cross-border financing – Is it practically viable anymore?</p> <p>Speakers: Peter Radlovacki, ATI, Deloitte, Priscilla Ratilal, Deloitte</p> <p>This session will focus on cross-border financing in the context of the recent changes to the thin capitalisation rules and the introduction of new debt deduction creation rules. Beyond the technical issues that taxpayers need to deal with, there are significant practical hurdles to overcome and burden of proof issues for new and historical debt arrangements. Add to that Australia's hybrid mismatch rules and Part IVA cases like Mylan, the question taxpayers are left asking – is related party debt funding a viable option anymore?</p>
3:00–3:30pm	Afternoon tea

Technical program

Thursday, 19 June 2025 continued

Time *AEST	Session
3:30 – 4:30pm	Session 6: Public country by country reporting – Tax Transparency Panel Panel: Sarah Stevens, PwC This session will explore the implications of public country-by-country reporting (CbCR) on corporate transparency, compliance, and global tax strategies. A panel of experts will address the challenges and opportunities presented by the Common Reporting Standard (CRS) and its role in enhancing tax transparency. The session will cover a range of practical issues associated with public reporting, including traditional matters such as the determination of corporate residency and private reporting, as well as contemporary issues like Intangible Property and cryptocurrency taxation. Discussions will encompass regulatory developments, compliance requirements, and the unique challenges posed by digital assets in the context of international tax reporting and transparency.
4:30 – 5:30pm	Session 7: Intangibles and royalties – The journey so far and what to expect next? Speakers: Denis Larkin, KPMG, Jennifer Ta, KPMG With the ATO's ongoing focus on intangibles and royalties, this continues to be a hot topic. This session will explore the current state of play, ATO developments and practical scenarios that multinational groups need to consider relating to IP risks and characterising outbound payments.
5:30pm	Masterclass close and networking function



Networking function

Join your colleagues and our esteemed speakers for an evening of drinks, canapes and networking.

Date: Thursday, 19 June 2025

Time: 5:30pm

Venue: Establishment Ballroom, Sydney

Price: Inclusive for all full registration delegates
Additional tickets are \$80 per person, see registration form for details

Dress: Business or Business Casual

Presenters

Chris Hogger is a Director in the Global Tax team at PwC and has 20 years' experience of considering international tax issues in the UK and Australia. Chris has extensive experience in regard to both inbound and outbound structures with a particular focus on transactions involving intangible assets. Prior to joining PwC, Chris spent five years at the ATO with responsibilities as part of the 'MAAL Project Team', in respect of the administration of the Diverted Profits Tax, and in several leading disputes on issues related to intangible assets.

Denis Larkin, FTI, is a Partner in KPMG's International Tax team and has over 20 years' experience in providing tax advisory services to foreign and domestic clients. Denis' experience covers advising multinational corporations in relation to their Australian businesses, including their inbound and outbound investment structures and funding requirements. Denis has extensive experience advising clients on all stages of the tax cycle, from due diligence and structuring of an acquisition, to implementation, entity reorganisations and on-going tax compliance processes.

Chris Miller is an Associate Partner in EY's Asia Pacific Tax Policy Centre

focused on assisting clients to navigate the rapidly evolving international tax policy landscape. Having recently worked in the OECD's Centre for Tax Policy and Administration, Chris's areas of specific focus include taxation of the digital economy and all aspects related to BEPS 2.0. This extends to tax policies matters relating to adoption of the Globe Model Rules and alternative means beyond Amount A that target source taxation of the digital economy. Chris was also responsible for the development of critical provisions within the OECD Transfer Pricing Guidelines and OECD Model Tax Convention. Prior to working with the OECD, Chris worked at the ATO and with another big 4 firm in Australia and the United States.

Tamara Phillips is briefed in a wide range of commercial and public law matters, with a focus on revenue law including international tax, local government/ environmental law and judicial review. She regularly acts for and against major corporations, Commonwealth and State agencies and regulatory bodies. She has appeared in the High Court, Federal Court, NSW Court of Appeal, NSW Supreme Court and in tribunals and inquiries.

Peter Radlovacki, ATI, is an M&A and International Tax partner at Deloitte with over 20 years of experience. Peter advises corporate, private equity and financial services clients. Peter specialises in advising on domestic and cross-border M&A activity, financing arrangements, restructures and on international tax matters. Peter also has in-house experience having worked for diversified financial services groups. Peter is a chartered accountant and registered tax agent and is completing legal studies.

Priscilla Ratilal is a Partner in the Deloitte Australia Transfer Pricing team. Priscilla has over 18 years of transfer pricing experience across Sydney, New York and London. Priscilla specialises in advising on intra-group financing activities and serving clients in the financial services industry across the asset management, insurance, banking and fintech sectors. Priscilla's client experience includes transfer pricing policy development and implementation, preparation of documentation, Country-by-Country reporting, mergers and acquisitions (due diligence and structuring) and engagement with tax authorities in the context of Advance Pricing Agreements (APAs), audits and reviews. Priscilla

also has in-house experience in a diversified financial services group, managing transfer pricing for the Americas region.

Sarah Stevens is a transfer pricing specialist in PwC's Global Tax team in Sydney. Sarah has specialised in transfer pricing since joining PwC in 1999 and has deep transfer pricing experience across a wide range of issues and industries, and has also supported clients to review their cross-border arrangements in light of other international tax rules such as the diverted profits tax and hybrid mismatch rules. Sarah has assisted numerous clients to review their cross-border funding arrangements in light of the ATO's risk assessment framework in PCG 2017/4.

Jayde Thompson is a Managing Director with Alvarez & Marsal Tax in Australia. With over 16 years of experience in corporate international taxation, Ms. Thompson is a trusted advisor to foreign investors structuring their Australian investments and Australian corporates expanding offshore. Ms. Thompson works closely with clients to navigate the complexities of the global tax landscape, providing expert guidance on structuring, compliance, and risk management

Presenters

in an ever-evolving international tax environment. Throughout her career, Ms. Thompson has served as the lead international tax advisor for numerous high-profile Australian and global accounts across diverse industries including mining, technology, retail, consumer products, private equity, financial services, infrastructure and manufacturing amongst others. For the past decade, Ms. Thompson has focused on assisting clients around the globe in navigating the complex tax modeling, structuring and compliance issues arising from the OECD BEPS Action Plan (BEPS 1.0), including associated Australian measures such as the Diverted Profits Tax and Multinational Anti-Avoidance Law, as well as the most recent Pillar Two initiative to implement a global minimum tax (BEPS 2.0). Prior to joining A&M, Ms. Thompson spent 13.5 years at PwC, where she most recently served as a Partner in the Global Tax team. During her time, Ms. Thompson lead the Pillar Two roll-out across Australia and Asia-Pacific, the Australian hybrid mismatch implementation and ESG Tax.



Venue and accommodation



The Establishment Ballroom, Sydney

252 George Street, Sydney, New South Wales

Nestled in the heart of the city, this iconic venue exudes sophistication and charm, offering the perfect backdrop for our Tax Disputes 2025 event. With its grand chandeliers, high ceilings, and luxurious décor, the Establishment Ballroom provides a setting that inspires thought leadership and meaningful connections. This exclusive space, renowned for hosting Sydney's most prominent events, will elevate your experience as we delve into the latest developments, strategies, and solutions in Tax Disputes.

Getting there

- **By Car:** The Establishment Ballroom is located on Level 3, 252 George Street, Sydney.
- **By Train:** The nearest station is Wynyard Station, just 250m away on George Street.
- **By Ferry:** Circular Quay Wharf is conveniently located 600m from the venue.

Parking

- **Wilson Parking – Australia Square Car Park:** Situated at 264 George Street, this facility is just a short walk from the venue. Merivale offers a 10% discount on night and weekend rates for pre-paid parking at selected Wilson car parks.
- **Secure Parking – 60 Margaret Street Car Park:** Located at 60 Margaret Street, this car park is approximately a 5-minute walk from the Establishment Ballroom.

Please note that reservations may be required for these parking facilities. It's advisable to book in advance to ensure availability.

Accommodation

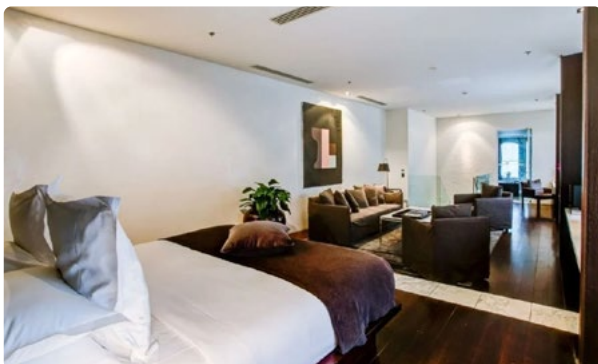
Make your experience truly exceptional by staying at the **Establishment Hotel**, located within the same iconic precinct as the Ballroom. This boutique hotel blends modern luxury with heritage charm, offering stylish and spacious rooms, impeccable service, and an unparalleled location in the heart of Sydney.

Whether you're traveling for business or leisure, the Establishment Hotel provides the perfect retreat after a day of engaging discussions and networking at the *Tax Disputes 2025* event. Enjoy the convenience of being steps away from the event venue, as well as Sydney's top dining, shopping, and cultural attractions.

Favourable room rates have been negotiated and secured Establishment Hotel. Accommodation bookings can be made by calling the Guest Services at the Establishment Hotel directly on (02) 9240 3100

**Subject to availability and will need to pay in full over the phone with a credit card.*

Please note that as per hotel booking conditions, all accommodation booked is non-refundable. All additional hotel incidentals, including breakfast, remain the responsibility of delegates, and individuals will be responsible for payment of the balance of their account when checking out of the hotel. Please note that extra charges may be incurred for additional guests and will be charged to individual room accounts upon checkout.



Event information

Confirmation of registration

Please note you will receive two separate emails in the form of a tax invoice at the time of payment and a confirmation email at registration completion.

Continuing Professional Development (CPD)

Attendance at the conference counts for 7 hours of CPD with The Tax Institute.

The Tax Institute's attendee hub

As a hybrid event, both in person and online, this event will be accessible to all delegates via our dedicated attendee hub. Program information, materials (technical papers and presentations), survey forms and more will be available via The Tax Institute's virtual attendee hub. All delegates are encouraged to access the platform prior to the event. Technical papers and PowerPoint presentations will be available on the attendee hub to all participating delegates approximately five days before the event. Delegates will receive instructions on accessing the virtual attendee hub by email.

Delegate list

A delegate list will be included on the attendee hub to assist with networking. Please indicate at the time of registration if you do not want your name to be included. Alternatively, you can edit your profile visibility settings in the virtual attendee hub at any time during the event.

Dress code

Business or business casual attire is suitable for the duration of the conference.

Networking function

The networking function will be held directly following the last session on Thursday from 5.30pm in the foyer of the Ballroom. The networking function is included in the event registration fee for delegates.

Special dietary and accessibility requirements

Please indicate any special dietary requirements at the time of registration. Please email us with any accessibility requirements at nationalevents@taxinstitute.com.au.

Cancellation policy

The Tax Institute reserves the right to alter, amend or cancel all or any of the arrangements contained in the program. Should a face-to-face event be cancelled due to an event beyond The Tax Institute's reasonable control including 'an act of god', 'pandemic', 'health-related event' or 'government requirements', we will endeavour to transition to an online format to deliver the event. If there is a difference in price, a credit will be provided to delegates to be used at a future event.

It is a condition of acceptance of registration that an administration fee of 20% of the registration fee be charged for cancellation if you can no longer attend the event. Cancellations must be received in writing by The Tax Institute five working days prior to the event. No refund will be given for cancellations received within five working days of the event. A replacement may be nominated. If the replacement is not a member, the non-member registration fee will apply. CPD hours will be allocated to the designated attendee.

The Tax Institute cannot accept responsibility for delegates' late transport arrivals or non-arrivals due to delays.

Privacy

We take your privacy seriously, and our policy can be viewed at: <https://www.taxinstitute.com.au/about-us/privacy-copyright-disclaimer>.

Enquiries

For further information regarding this event, please contact the Events Team on 1300 829 338 or nationalevents@taxinstitute.com.au.

For registration enquiries, please contact customeradmin@taxinstitute.com.au.

Registration

Registration inclusions

	Online access to presentations and technical papers	Morning/ Afternoon tea/ Intensive lunches	Conference networking*
Full registration This registration option entitles one delegate to attend the entire event.	✓✓	✓✓	✓✓
Online Full Registration This registration option entitles one delegate to attend the entire event virtually.	✓✓		

*Additional tickets to the Networking function can be purchased on the registration form.

Discounts

Early bird registration

All registrations received and paid on or before 23 May 2025 will be entitled to an early bird discount.

Please note: The registration fee does not include accommodation, hotel incidentals or transfers.

Group discounts

Purchase three full registrations (early bird or standard) and receive a fourth full registration for free. The free fourth registration must be of equal or of less value to the three paid registrations.

This offer cannot be redeemed in conjunction with any other promotional offer or code. All attendees must be from the same firm and all registration forms must be submitted together. For further information please contact the national events team on 1300 829 338 or nationalevents@taxinstitute.com.au.

Register now!

[Register online ▶](#)

[Register via form ▶](#)
included in this brochure



A tax invoice and confirmation letter will be sent on receipt of your registration. Please photocopy for additional delegates and retain original copy for your records. All prices quoted are in Australian dollars and include GST where applicable. ABN 45 008 392 372.

1 Registration

Please see page 11 for registration inclusions.

Full registration – 7 CPD hours

	Member	New member*	Non-member
Face to face Early bird registration Register on or before 23 May 2025	<input type="checkbox"/> \$1,045	<input type="checkbox"/> \$1,045	<input type="checkbox"/> \$1,345
Face to face Standard registration Register after 23 May 2025	<input type="checkbox"/> \$1,245	<input type="checkbox"/> \$1,245	<input type="checkbox"/> \$1,545
Online Early bird registration Register on or before 23 May 2025	<input type="checkbox"/> \$1,045	<input type="checkbox"/> \$1,045	<input type="checkbox"/> \$1,345
Online Standard registration Register after 23 May 2025	<input type="checkbox"/> \$1,245	<input type="checkbox"/> \$1,245	<input type="checkbox"/> \$1,545

☐ I understand that the registration fees do not include printed materials. Access to materials will be electronic.

Networking function

The networking function is INCLUDED in the registration fee for delegates attending the full Intensive.

19 June 2025 at the Establishment Ballroom, Sydney

- ☐ Yes, I WILL be attending the networking function OR
- ☐ No, I WILL NOT be attending the networking function
- ☐ Yes, I require additional tickets for the networking function at \$80 per person

No. x tickets at \$80 each: \$

Dietary requirements:

2 Delegate contact details

Member no.:

If your member details are up-to-date, you can skip this section.

Title: ☐ Mr ☐ Mrs ☐ Miss ☐ Ms Date of birth:

First name:

Last name:

Position:

Company:

Address:

Suburb: State: Postcode:

Telephone: Mobile:

Email:

☐ Please tick this box if you do not wish your name to be included on the delegate list provided to all attendees for networking

*Become a member and save!

Not a member of The Tax Institute yet? Sign up for membership along with your event registration and:

- save over \$220 on Affiliate membership for the first 12 months
- access member-only prices to this and future events
- access all member-only technical resources.

Find out more about membership at
taxinstitute.com.au/membership

I hereby apply for membership of The Tax Institute and declare that I am a person of good fame, integrity and character. I agree to be bound by the Constitution of The Tax Institute.

Signature:

Date of signature:

JOIN TODAY

3 Payment summary

Registration fees

\$

Additional guest tickets – Networking function (\$80)

\$

Total payable

\$

Please note: The Tax Institute cannot accept responsibility for delegates' late flight arrivals.
Transfer costs are non-refundable and non-transferable.

4 Payment method

Please note: all registration payments must be made prior to the event, unless other arrangements have been made with The Tax Institute.

☐ **Cheque payable to The Tax Institute** (in Australian dollars)

☐ **Credit card** Card type: ☐ AMEX ☐ Visa ☐ MasterCard ☐ Diners

Name on card:

Card no.:

Expiry date:

Cardholder's
signature:

For our refund, cancellation and replacement policy visit taxinstitute.com.au/professional-development/event-policy.

For event enquiries, please contact the National Events Team on 1300 829 338 or nationalevents@taxinstitute.com.au

For registration enquiries, please contact customeradmin@taxinstitute.com.au

Collection notice: The Tax Institute (TTI) complies with its obligations under the Privacy Act 1988 (Cth) with respect to how it handles personal information. For information on how TTI collects, uses, holds and discloses personal information, please see its privacy policy at www.taxinstitute.com.au. [You can also request TTI's consultants to provide you with a copy of TTI Privacy Policy.] By submitting your application to TTI, you confirm that you have read TTI's Privacy Policy and you consent to your personal information being collected, used and held by TTI and disclosed to third parties in accordance with TTI's Privacy Policy.





To register

Email customeradmin@taxinstitute.com.au

Mail Level 21, 60 Margaret Street, Sydney NSW 2000

Online taxinstitute.com.au

Join the conversation

-  linkedin.com/school/the-tax-institute
-  facebook.com/thetaxinstitute
-  twitter.com/taxinstituteoz
-  instagram.com/thetaxinstitute_

taxinstitute.com.au

